

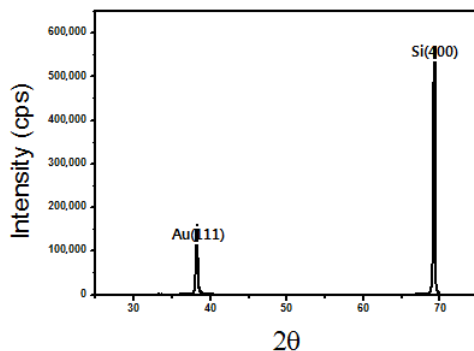
(111)Au wafer

Data Sheet

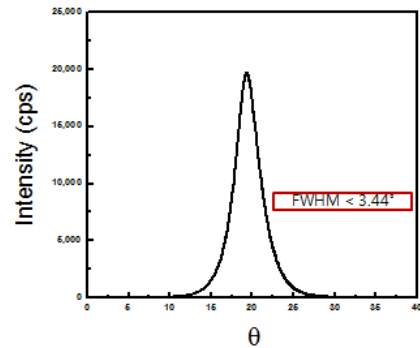
- **Au(111) film** has characteristics of good adhesion, high (111)-crystallographic orientation, smooth film surface, and very low electrical resistivity.

- **Features**

Items	Unit	Data
Electrical Resistivity @1500Å	$\mu\Omega\cdot\text{cm}$	< 4.0
Surface Roughness (RMS)	nm	< 1.0
Crystallographic Orientation	-	(111)
FWHM of (111) peak	-	< 4°
Substrates	-	Glass, PZT, SiO_2/Si , etc.
Adhesion layers	-	Cr (20-50nm)

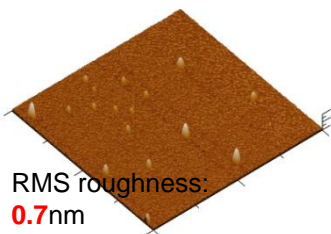


X-ray Diffraction Pattern



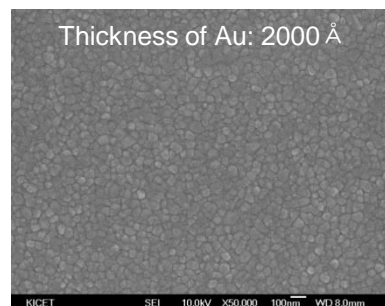
Rocking Curve of (111) Peak

Thickness of Au: 500 Å



**Surface Morphology
(by AFM)**

Thickness of Au: 2000 Å



**Surface Morphology
(by SEM)**