

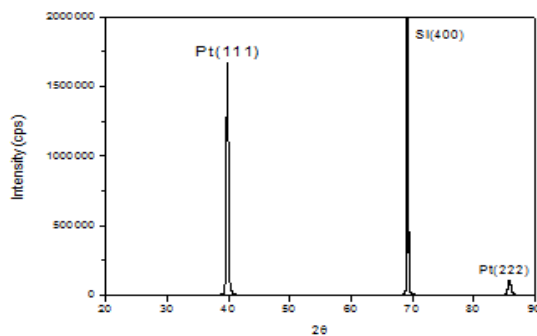
(111)Pt wafer

Data Sheet

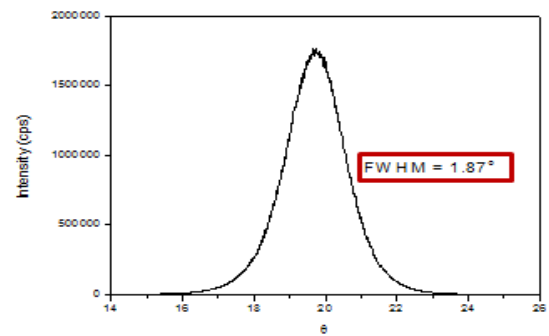
- **Pt(111) film** has characteristics of thermal stability, strong (111)-crystallographic orientation, smooth film surface, and very low electrical resistivity nearly equal to bulk.

- **Features**

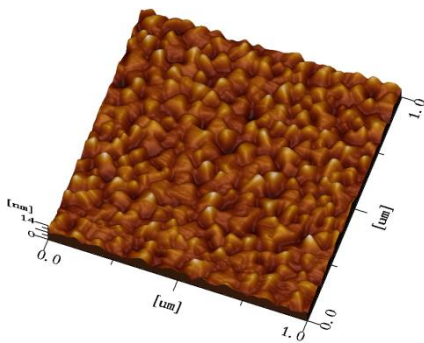
Items	Unit	Data
Electrical Resistivity @1500Å	$\mu\Omega\cdot\text{cm}$	< 15 (typical: 13)
Surface Roughness (RMS)	nm	(typical) 2
Crystallographic Orientation	-	(111)
FWHM of (111) peak	-	< 2°
Substrates	-	SiO ₂ /Si, others
Adhesion layers	-	Ti (10nm), TiO ₂ (20nm)



X-ray Diffraction Pattern



Rocking Curve of (111) Peak



AFM Image of Pt film (1.0x1.0 μm^2)

